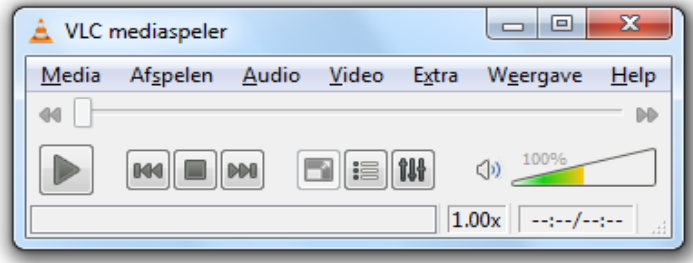


## Instruction manual IPTV Student living facility Zuiderzeeweg

This is the instruction manual for students living at deKey Zeeburgeiland.

Step 1: download VLC media player



Go to <http://www.videolan.org/vlc/> in order to download the application.

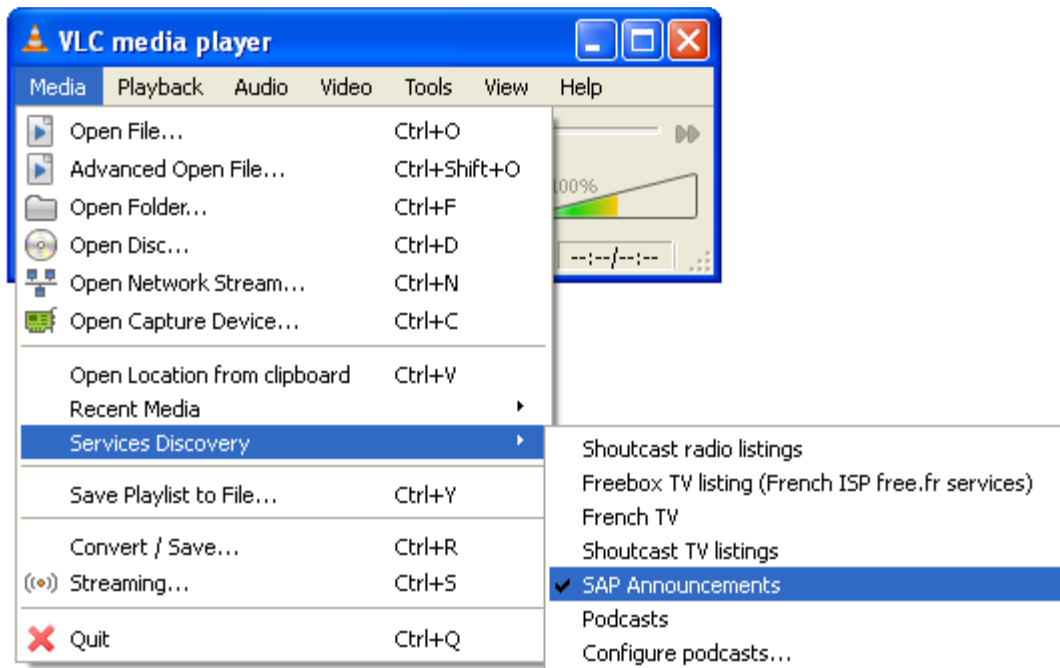
Step 2: Installing VLC

Just follow the step and leave everything to the default configuration while installing VLC.

Step 3 Setting up de Services

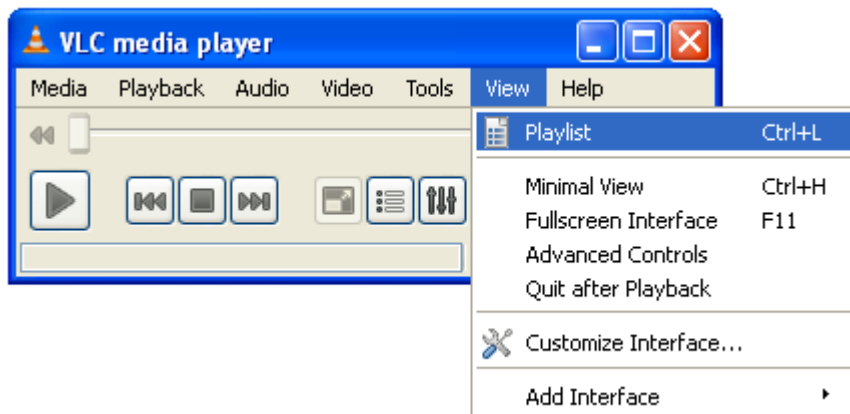
- Go to the Media option on the main menu.
- Go to Services Discovery
- Select SAP Announcements

See picture below



Step 4: Viewing the channels

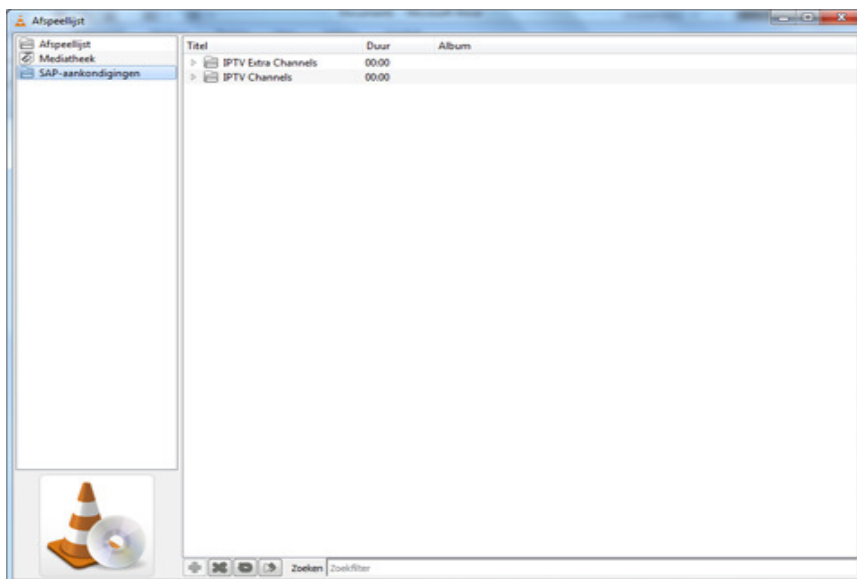
Go to View → Then click on Playlist (for a shortcut you can press Ctrl+L) (view image below)



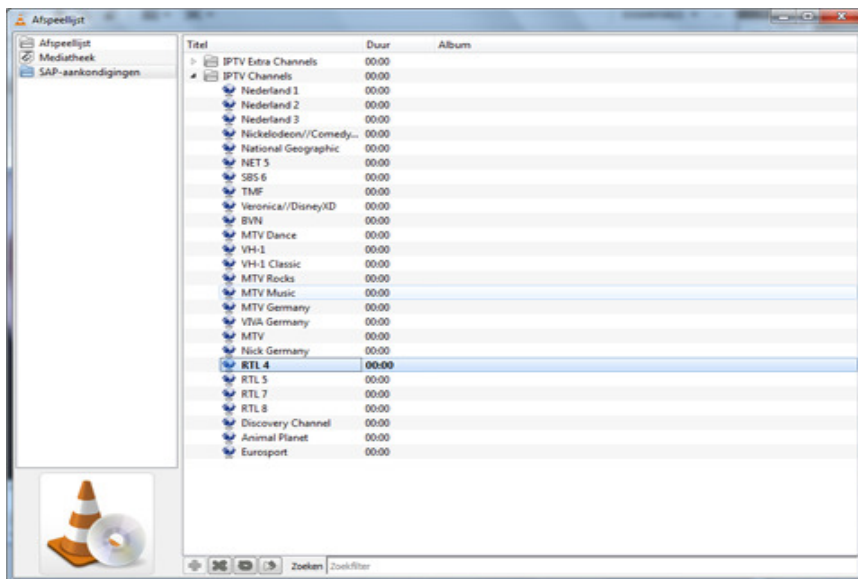
Step 5: Select a channel

Here you will see the content of the playlist.

- Select SAP Announcements (see image below)

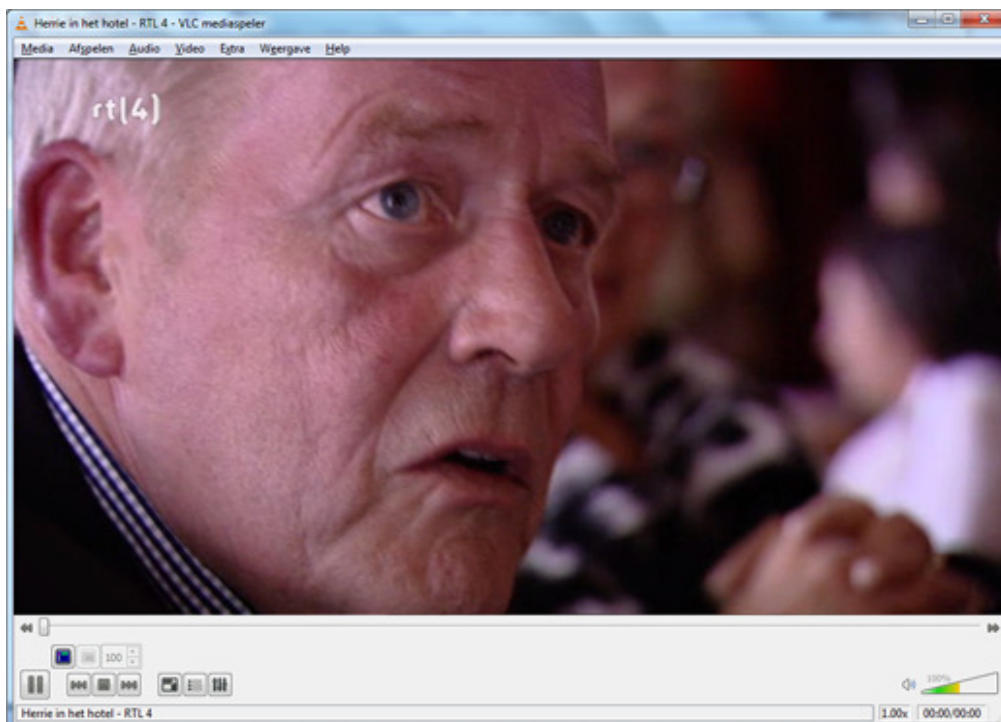


- After selecting SAP Announcements click on IPTV channels (view image below)



Step 6: View channel

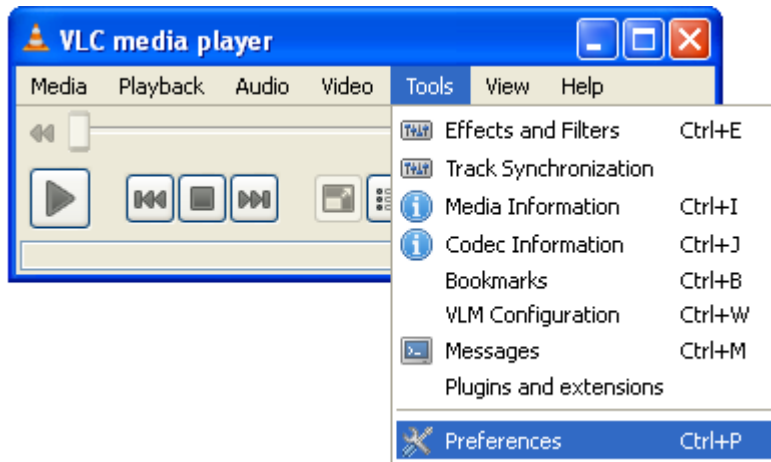
By double clicking on the channel you can open the stream and you will be able to see tv (view image below)



These steps are needed in order to save the settings so that you don't have to repeat these steps again.

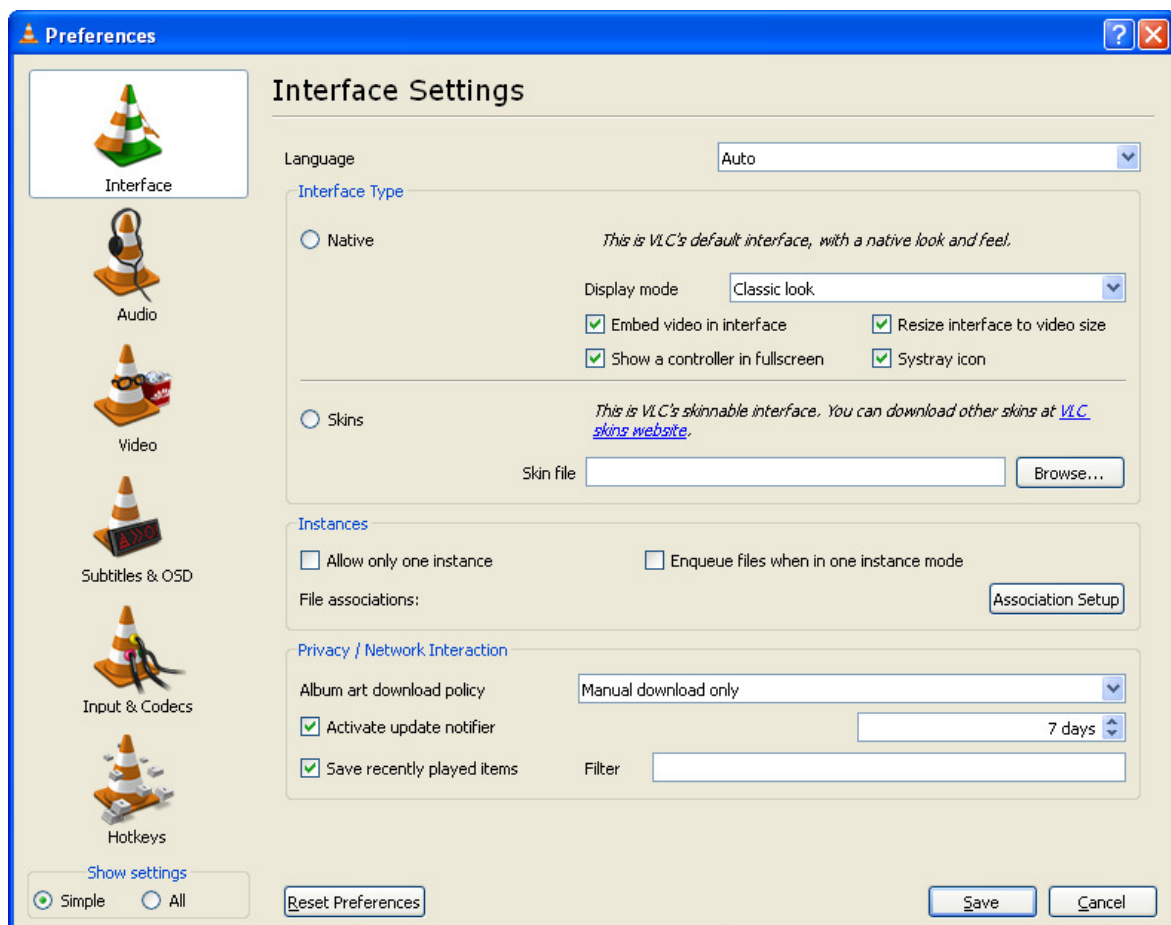
Step 1: Preferences

Go to Tools → Preferences ( shortcut key Ctrl+P) (view image below)



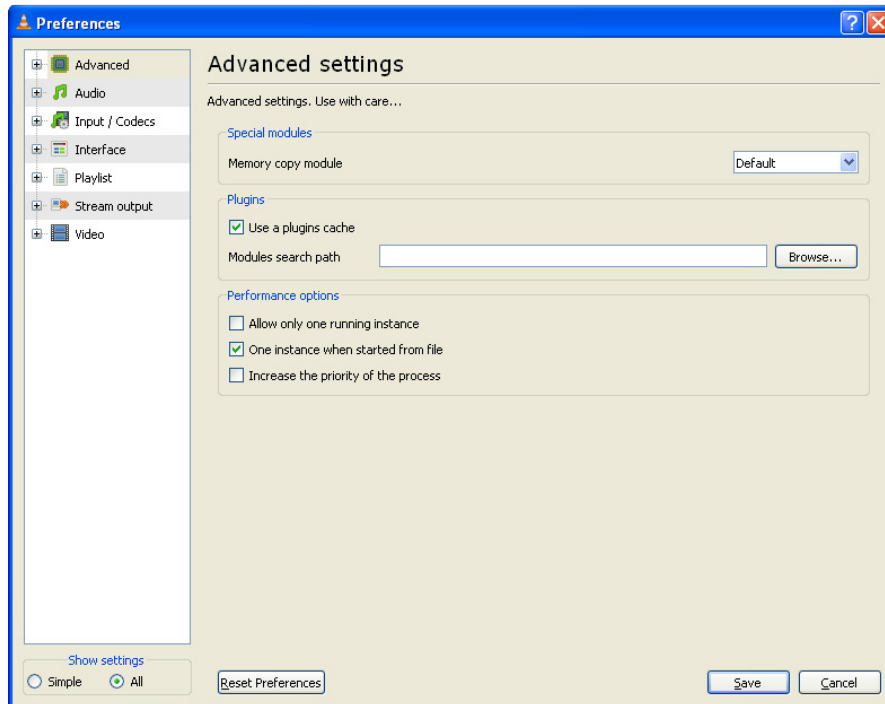
Step 2: Show all settings

Left below you will find SHOW SETTINGS and by default it's set on Simple, change this to All by clicking on ALL



### Step 3: Set Playlist settings

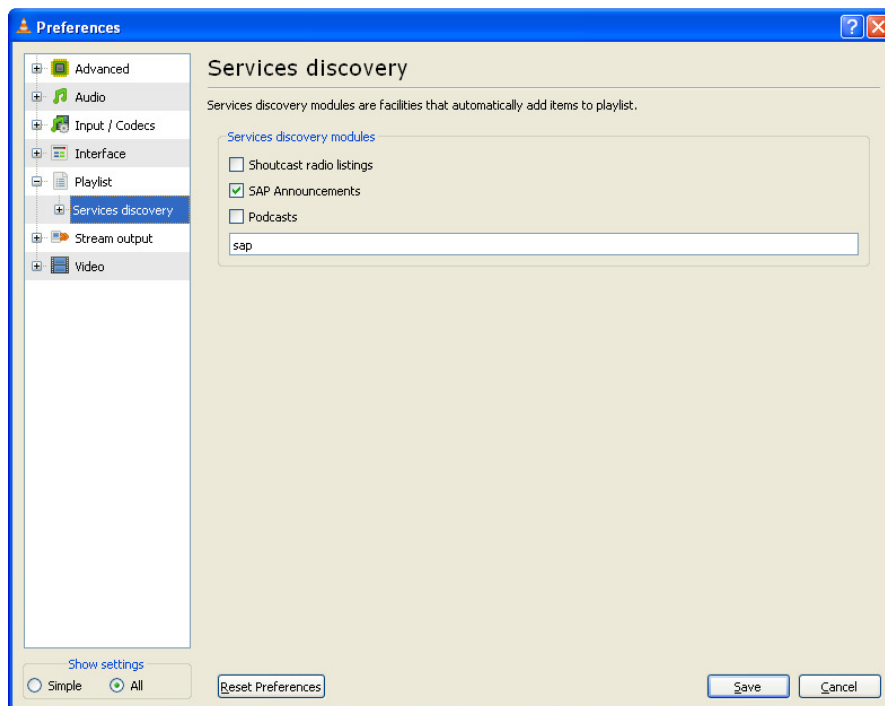
Go to PLAYLIST and click on the + sign (view image below)



This is the result after you clicked on the + sign (view image below)

### Step 4: Set Service discovery

Click on Services discovery and select SAP Announcements (view image below)



**Step 5: Remember to click on the save button.**